



**CONNECT AND PROTECT**

# nVent RAYCHEM Pipeline Supervisor

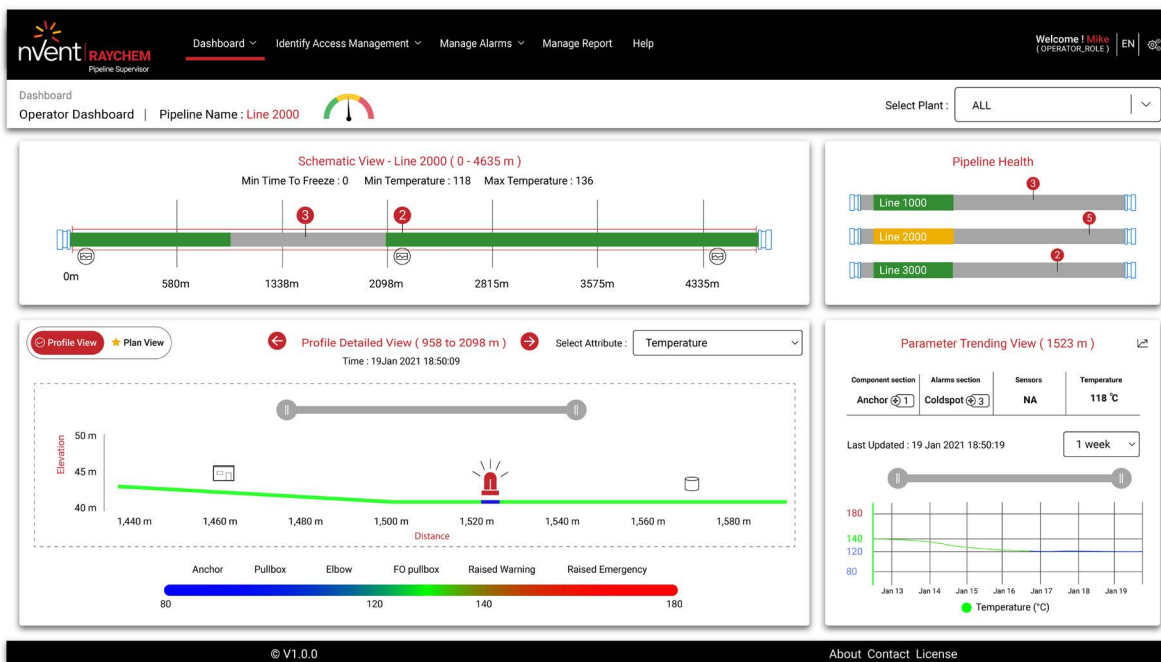


**RAYCHEM**

Pipeline temperature monitoring on an operating pipeline is very helpful, but often severely underutilized due to operator inattention or lack of data interpretation skills. This is why customized algorithms and machine learning, when combined with fibre optic Distributed Temperature Sensing (DTS), can bridge the gap between "data" and actionable "information".

## WHY DO WE NEED PIPELINE MONITORING?

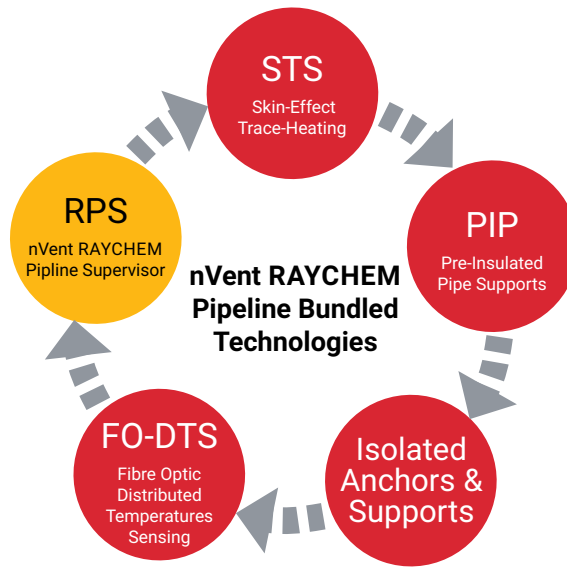
- **Enhanced Risk Avoidance** – Operators need to visualize all the risks to keep the pipeline in a safe operating zone. Catastrophic pipeline ruptures lead to significant financial, environmental, and reputational damage to any company. The implementation of pipeline predictive analytics provides your organization with an additional level of protection to help lower the risk profile of critical pipeline assets.
- **Critical Situational Response** – When you lose power or need to ensure uniform re-melt, critical monitoring and analytics minimize the risk state. Real-time data combined with targeted algorithms can help in significantly reducing hazards that are associated with unwanted operational situations or outcomes.
- **Operational Optimization** – Advanced alarm notifications of concerning trends or events are provided when an abnormality is detected, minimizing full-time operator engagement. A real time Risk Gauge in the dashboard provides a high level status indicator of your pipeline.
- **Flow Assurance** – Ensuring that the fluid in your pipeline is flowing (or ready to flow) by monitoring for a Uniform Thermal Profile is key. Remove the guesswork to verifying this critical prerequisite to starting your pumps.



## NVENT RAYCHEM PIPELINE SUPERVISOR (RPS) INTRODUCTION

nVent RAYCHEM Pipeline Supervisor (RPS) is a culmination of nVent's 15+ years of experience troubleshooting, optimizing and maintaining our clientele's temperature-critical Sulphur pipeline applications. We combined the power of distributed temperature data from DTS with specially customized algorithms that create a wealth of useful analytics, on a real-time basis. These analytics are configured to your specific pipeline geometry and use time trending to create warnings/alerts of predicted conditions along your pipeline, while also providing the time and location where problems are occurring (or may be about to occur), along your pipeline asset.

- nVent RAYCHEM Pipeline Supervisor takes the DTS (Distributed Temperature Sensing) data from a fibre optic sensor on a pipeline and analyzes it using complex algorithms.
- nVent RAYCHEM Pipeline Supervisor essentially creates a "stethoscope" on the pipeline to see what is happening in real-time, (e.g., temperature, phase change status, re-melted zones, rupture detection).
- Creates "actionable" tasks and "alerts" for operations & maintenance personnel that are data driven.
- Provides advance warning of heater performance degradation, or pipeline operations outside of normal parameters.
- Allows access to critical pipeline heating and temperature status remotely via Tablet, iPad, Smartphone, remote PC, etc.
- Configured for your specific pipeline service and operational design parameters.



### NVENT RAYCHEM PIPELINE SUPERVISOR BENEFITS

- Enhanced operational insights and confidence
- Deeper understanding of actionable tasks
- Historical trending analysis for increased operational transparency
- Analytics can help to create a safer facility for both employees and society
- Controlled login access and software permissions for each team member
- End-to-end services support framework for seamless integration and performance

### FEATURES BY TIERED GROUPING

nVent RAYCHEM Pipeline Supervisor	Select	Pemium
Multiple Pipeline Asset Monitoring Functionality	✓	✓
Sensing Fiber Attenuation Profile	✓	✓
Complete Pipeline Temperature Profile w/ Color Gradients	✓	✓
Critical Alarm Management	✓	✓
Automated Data Backup	✓	✓
Historical Time Trending Analysis (Temperature)	✓	✓
Enhanced Configurable GUI	✓	✓
DTS System Health	✓	✓
Configurable Alarm Latching	✓	✓
Role Based Permissions / Access	✓	✓
Multiple Delivery Platforms (Tablet & Mobile Phone Access)	✓	✓
Pipeline Profile vs. Plan View Toggling		✓
Insulation Health Monitoring		✓
Anchor Health Monitoring		✓
Site Asset Landmark Mapping		✓
Real-Time Pipeline Health Gauge (Based on Key Metrics)		✓
"Time-to-Freeze" Prediction		✓
RTD vs. DTS 2-Way Validation		✓
Shift Summary Report		✓

The above offering is illustrative and may be modified by nVent from time to time with prior notification to Client. New functionalities, features and/or modules developed by nVent may be assigned by nVent, in its sole discretion, to the Select Offer, the Premium Offer, or to a new Offer category, which nVent reserves the right to create.

✓ – Features will be launched in the near future.

## SOFTWARE SERVICES FRAMEWORK MODEL

---

nVent delivers a comprehensive services package including the following:

- Software configuration including site asset landmark mapping and unique user access parameters
- Installation, commissioning and operator training
- Multi-level technical support framework
- Updates and upgrades using multiple delivery options to meet customer requirements and ensure latest versions are installed

## SOFTWARE DATA PROTECTION

---

- At nVent, we believe that safer systems ensure a more secure world. The security of your data is important to us. nVent follows current industry standards and has put in place technical and organizational safeguards to protect the confidentiality, integrity, and availability of your data. We protect your data against unauthorized access, use or disclosure, using security technologies and procedures, such as encryption and access controls and limitations.
- Measurement and alarm data is backed up on a removable hard drive, and the most recent 2 weeks of data will be available for viewing in the software dashboard.
- nVent applies processes and technologies to help prevent RAYCHEM Pipeline Supervisor (RPS) from containing viruses or any other contaminants that access (without authorization) or shut down computer systems, networks, software or other data or property ("Malware").



### North America

Tel +1.800.545.6258  
Fax +1.800.527.5703  
[thermal.info@nVent.com](mailto:thermal.info@nVent.com)

### Europe, Middle East, Africa

Tel +32.16.213.511  
Fax +32.16.213.604  
[thermal.info@nVent.com](mailto:thermal.info@nVent.com)

### Asia Pacific

Tel +86.21.2412.1688  
Fax +86.21.5426.3167  
[cn.thermal.info@nVent.com](mailto:cn.thermal.info@nVent.com)

### Latin America

Tel +1.713.868.4800  
Fax +1.713.868.2333  
[thermal.info@nVent.com](mailto:thermal.info@nVent.com)



Our powerful portfolio of brands:

**CADDY ERICO HOFFMAN RAYCHEM SCHROFF TRACER**